



SAMPOERNA KAYOE

PLYWOOD



UNLIMIT POSSIBILITIES



SAMPOERNA KAYOE

Sampoerna Kayoe Plywood Catalog | Table of contents:

Corporate Profile - 02 | Sustainable Resources - 06 | List of Sampoerna Kayoe Products - 08
Plywood Overview - 10 | Product Details - 18 | Certification - 19



SAMPOERNA KAYOE

Sampoerna Kayoe A Leading Engineered Wood Solution Provider in South East Asia

Established in 1978, we started out as a downstream processed timber products manufacturer without natural forest concessions and industrial forest plantations. Our first operation was started in Sulawesi, with an annual production capacity of 12,000 m³.

Our Journey

Over the past 40 years, we have focused extensively on developing our research and development, management, processing, logistics, and distribution capabilities so as to achieved a competitive edge over other competitors. We have developed a strong business and operating model, enabling us to continuously expand our processing capacity and maintain sustainability in production. Our strong experience has helped us gain success and grow steadily amid the changing business environment. The organic expansion in our group contributed a total production capacity of more than 850,000 m³ annually, allowing us to be a major engineered wood manufacturer in Indonesia and one of the largest globally.



Unlimit Possibilities

With the fast-paced and ever-changing business environment, we have undergone a brand transformation and rebranded our products under the "Sampoerna Kayoe" brand. Our key brand identity is clearly defined by our tagline, "Unlimit Possibilities", as we strive to unlimit possibilities for our wood solutions in our journey to grow and expand internationally. Nurtured with Sampoerna's value and philosophy, we embrace "Anggarda Paramita", which means "Towards Excellence", as a way of life and live the "Three Hands" philosophy as we value collaboration with our stakeholders in all partnerships.



Striving for Customer Satisfaction

Achieving the satisfaction of our customer is our utmost priority. With persistent empowerment to have the customer's best interests in mind, our employees strive to care for and to meet the needs of our customers with enthusiasm.



High Capacity for Wide Range of Selections

Our main products are plywood, laminated veneer lumber (LVL), deck and door. Employing the most skilled production team, we only use first-choice wood for our products to create customised solutions for our customers. We are also equipped with high capacity production facilities to meet the growing market demand from all segments and to fulfill our mission of becoming the market leader in the industry.



Pursuing A High-Standard Process

Through our experience in the industry, we have acquired the knowledge of excellent production process. We ensure that our products and process comply with the global standards for quality and environment management. Moreover, we are 100% inspected according to international standards; we have obtained certifications from Japan Agricultural Standard (JAS), United States Environmental Protection Agency (US EPA), California Air Resource Board (CARB), ISO 9001 (Quality Management System), ISO 14001 (Environment), Green Label Singapore, Green Building Council Indonesia, and many more. We are committed to provide high-quality products consistently.

Available Worldwide

(Asia, America, Australia, Africa, Europe)

Algeria, Australia, Belgium, China, Croatia, Denmark, France, Germany, Hong Kong, India, Indonesia, Iraq, Italy, Japan, Jordan, Kuwait, Malaysia, Mexico, New Zealand, Oman, Philippines, Poland, Puerto Rico, Saudi Arabia, Singapore, South Korea, Spain, Sweden, Switzerland, Taiwan, Thailand, Timor Leste, United Arab Emirates, United Kingdom, USA.



Our manufacturing facilities:



Production Capacity
>850,000 m³



6 main processing plants in Java, Sumatra, Sulawesi.



10 satellite veneer plants in Java and Sumatra

Sustainable Resources

We continuously improve technology and efficiency to maximize our production capacity while maintaining sustainability of natural resources.

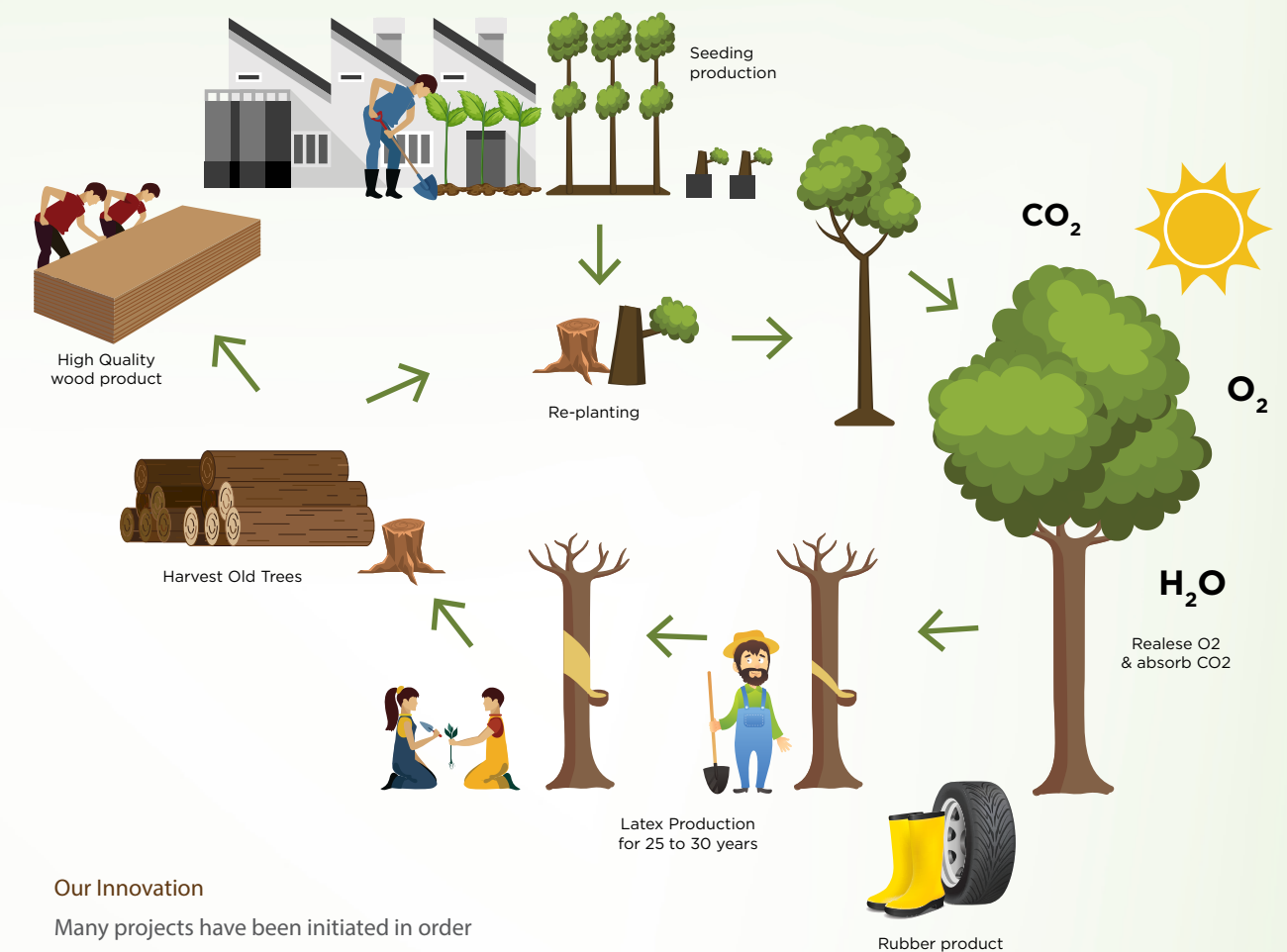
Corporate Responsibility

Sampoerna Kayoe is committed to adopt an integrated approach in achieving business development and responsible environmental management. Our commitment to sustainable development is reflected in our Corporate Values and Code of Ethics. In the process of converting raw materials into finished products, we adopt a fundamental principle: "Satisfying the present needs without compromising on the future". As a trusted timber-processing company, we are committed to our mission and corporate values to ensure long-term sustainability of business, community, and environment.



Legal Sources

Sampoerna Kayoe's log is sourced entirely from legal concession areas in Indonesia, with 90% originating from community and plantation forests. We continue to create new commercial timber growing areas and seek new sources of plantation wood. Our log purchasing policy requires that any purchase of log shall comply with applicable regulations and legal procedures in Indonesia. We refuse any log purchase from any suppliers or farmers involved in the practice of illegal land burning. We are proud that all our facilities comply with the Indonesian national timber-legality verification scheme, SLVK. This scheme is the implementation of the Voluntary Partnership Agreement (VPA) on Forest Law Enforcement, Governance and Trade (FLEGT) signed by European Union Countries as the Indonesian government is campaigning for wider recognition for its wood products in other markets.



Our Innovation

Many projects have been initiated in order to achieve sustainable solution for our natural resources, resulting in two innovation breakthroughs.

Sampoerna Kayoe pioneered the use of alternative sustainable wood, such as falcata timber, in response to the limited availability of hardwood. Falcata is a fast-growing tree species that is abundantly available in Indonesia and is easily replanted to promote sustainability of our natural resources.

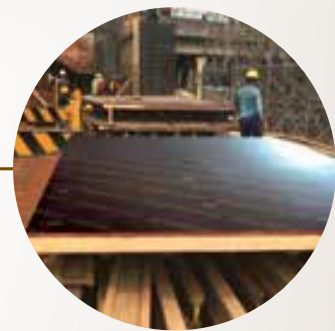
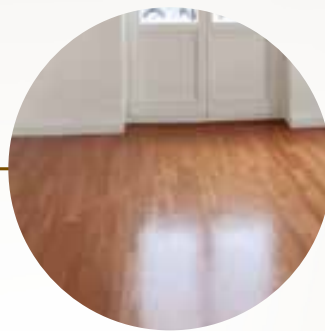
Our latest innovation is the utilisation of rubber plantation waste. Rubber trees (*Hevea Brasiliensis*) are planted for the production of latex and the economic life span is between 25 and 30 years. At the end of its life span, the trees are felled and the wood from the tree has been traditionally regarded as waste. With our technology, however, we are able to transform this waste into high-quality wood products.

1. As rubber trees are planted, they release O_2 and absorb CO_2 during the day; this process itself has positive impacts on the environment.
2. After it reaching maturity, rubber trees are tapped and kept for latex production for 25-30 years. Some examples of their finished products include tires, rubber gloves and rubber shoes.
3. After the rubber trees stop producing latex, the wood remains are typically burnt due to the poor quality of wood products that usually result from its production. However, with our current technology, the rubber trees which are processed by Sampoerna Kayoe, are able to produce wood products which are high-quality for daily usage.
4. Sampoerna Kayoe cares about the sustainability of rubber wood production; we create a superior rubber seed via our various innovative practices. We replant the trees by ourselves and also distribute the seeds to local community for planting. This process not only ensures the sustainability of our rubber wood production, it also benefits the local community due to the commercial value of latex production after the trees reach maturity.

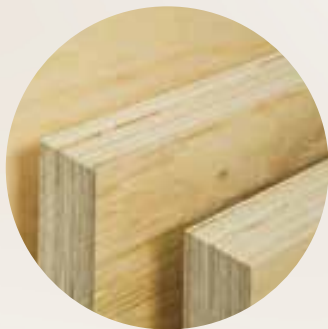
Our Product Categories



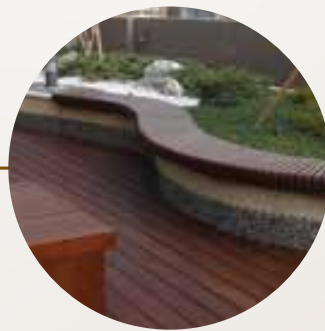
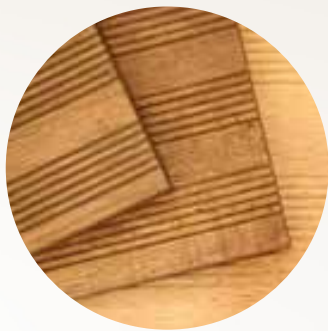
PLYWOOD



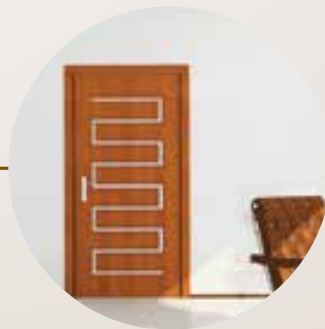
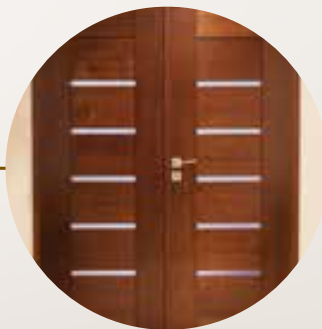
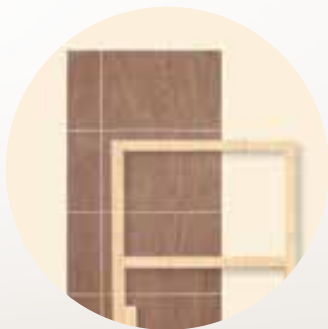
LVL



DECK



DOOR





PLYWOOD

We offer a full range of plywood collections for your industrial and residential needs.





GENERAL PLYWOOD



Suitable for Furniture, Secondary Process and Interior

Our plywood is known for its quality. Understanding that flatness and dimensional stability are essential in furniture manufacturing and secondary processing of plywood to bring about a perfect finishing and to minimize expansion and contraction, our range of plywood products exhibit the characteristics of being flat, dimensionally stable, durable, and of high precision. Our general plywood can also be used in concrete formwork as a cheaper option for low-rise construction work.



FLAT



DIMENSIONALLY
STABLE AND
PRECISE



SMOOTH
SURFACE



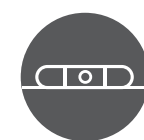
SUPERIOR
STRENGTH AND
DURABILITY





FLOOR BASE PLYWOOD

Our plywood products are the perfect choice for any interior work. We offer plywood designed with a more precise dimension as it is of great importance to interior work, particularly for flooring. We invest extensively in technology and employee development to maintain high accuracy and consistency in our products.



Suitable for interior

Additionally, we only use high strength adhesives for our plywood to avoid tear-out and ensure durability of your interior products. Alternatively, you may choose the glue type based on your needs.



PRECISELY
DIMENSIONED



SUPERIOR
STRENGTH AND
DURABILITY



SMOOTH
SURFACE

FILM-FACED PLYWOOD



Suitable for
Construction

We provide incredibly strong, flat and durable plywood, such as the film-faced plywood, for building materials including concrete formwork. Our film-faced plywood is primarily made from rubber wood plywood covered with a protective film on both or either side of the surface. The combination of rubber wood with phenolic glue coating and quality phenolic film by Dynea provides for an excellent balance of strength to weight ratio. In addition, the water-resistant paint used for edge sealing weather-proofs our product, making it ideal for construction due to its smooth surface and scratch resistant properties. It can be used multiple times and its resistance to shrinkage makes it a very economical choice for high-rise construction purposes.



VERY FLAT



REUSABLE
UP TO 12 TIMES



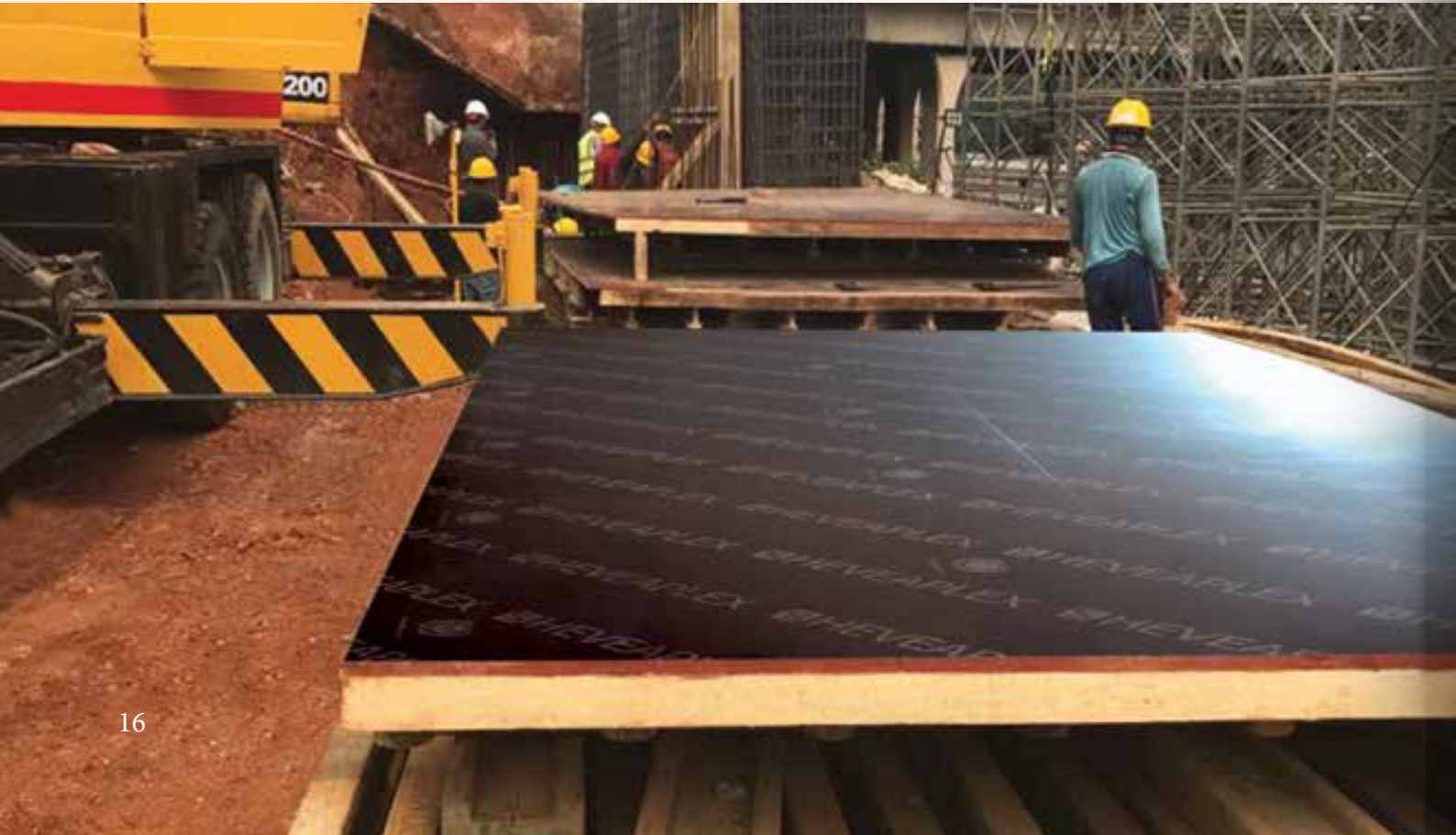
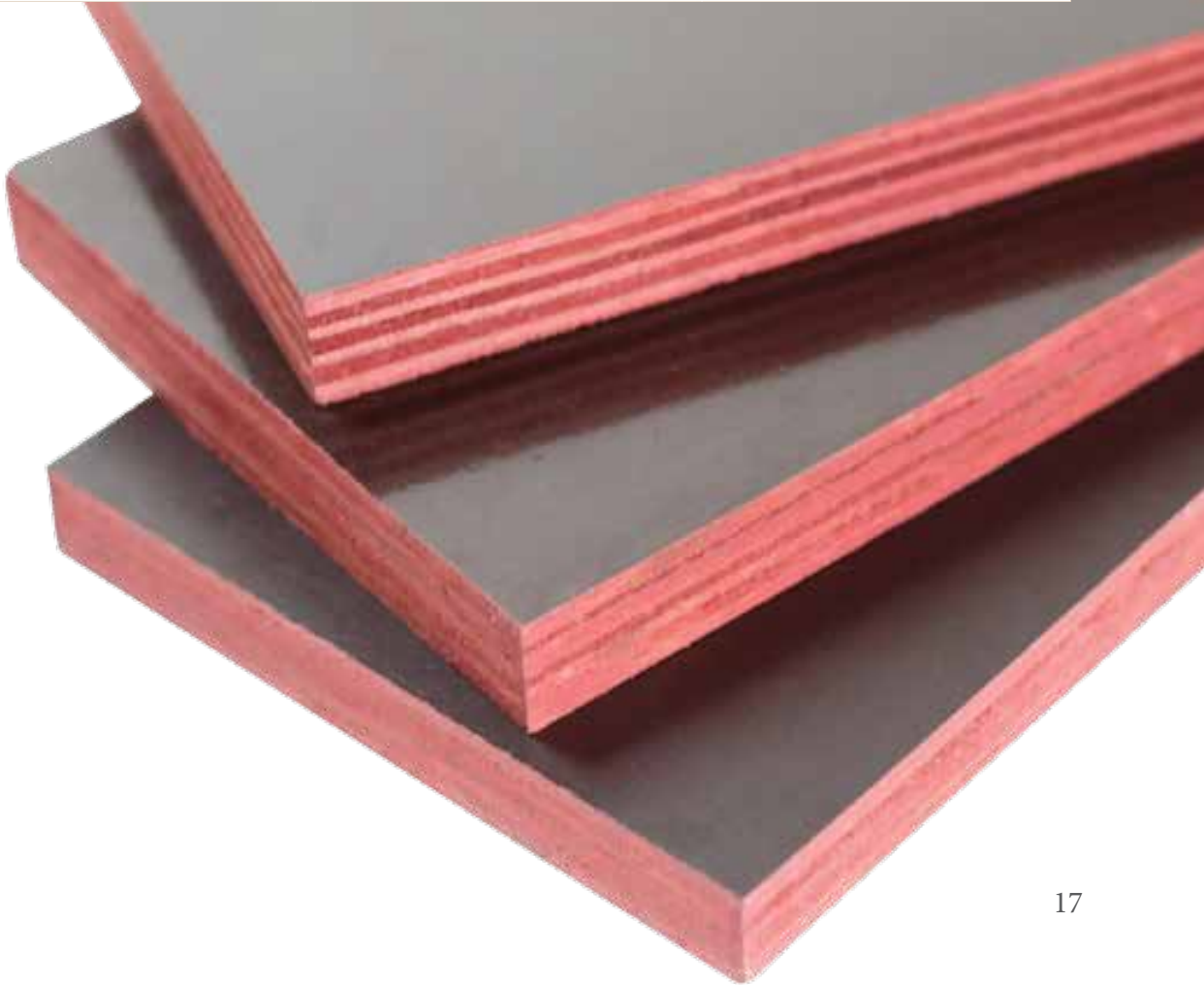
SCRATCH
RESISTANT
AND SMOOTH
SURFACE



EXCELLENT
STRENGTH
TO WEIGHT
RATIO

PERFORMANCE CHARACTERISTICS OF FILM-FACED PLYWOOD

Testing	Method	Value Film Face18mm
MC	JAS for LVL 2013	7.42%
Density	ASTM D143-94 2000 (Sec. 19)	< 14%
		650 - 750 kg/m ²
Delamination	JAS for LVL 2013 Cyclic Extreme (Internal Standard)	Passed
		Passed
		Passed
Bonding	JAS for Plywood 2014	0.7 N/mm ² - 1.5 N/mm ²
Bending	JAS for Plywood 2014	Long : MOE: 5000 - 5500 N/mm ² MOR: 24 - 50 N/mm ²
		Short: MOE: 4000 - 7000 N/mm ² MOR: 20 - 65 N/mm ²
Emission	JAS for Plywood 2014	Classification F***
Radial & Tangential Shrinkage	ASTM D143-94 2000 (Sec. 20)	2.05% & 0.24%
Determination of swelling in thickness	BS EN 317 : 1993	5.83%
Hardness	ASTM D 143	6321.68 N
Water Resistant	JAS for Plywood 2014	Passed
Stain Test	JAS for Plywood 2014	Passed
Weather Test	JAS for Plywood 2014	120 days (continued on)
Concrete Casting Test	Internal Standard	13 Cycle (continued on)



PRODUCT DETAILS

Category	Product Names	Wood Species Used	Characteristic	Thickness (mm)	Size (mm)
GENERAL PLYWOOD	  SAMPOERNA KAYOE TUNAS PLYWOOD 1001	Falcata	Affordable price with good quality Uniform Color Less vulnerable to insect infestation	2.7	1220 x 2440 (4" x 8")
				3.6	
	  SAMPOERNA KAYOE PALEM PLYWOOD 1001	Faceback: MLH Core: Falcata	Stronger than all Falcata plywood More resistant to shrinkage Natural wood appearance	4.8	945 x 1840 (3" x 6")
				5.5	
				7.5	
	  SAMPOERNA KAYOE GMELINA PLYWOOD 1102	MLH	Superior strength More dimension stability Natural wood appearance	8.5	910 x 2130 (3" x 7")
				11.5	
	  SAMPOERNA KAYOE HEVEA PLYWOOD 1502	Rubber Wood	Strong (as strong as Meranti) resistant to shrinkage Sustainable wood	15	
				18	
FLOOR BASE PLYWOOD	  SAMPOERNA KAYOE TUNAS FLOOR BASE 1202	Falcata	Affordable price with good quality Strong High precision	7.0	1220 x 2440 (4" x 8")
				8.9	945 x 1840 (3" x 6")
	  SAMPOERNA KAYOE GMELINA FLOOR BASE 1202	MLH	Premium quality Super Strong High precision	11.5	945 x 1840 (3" x 6")
FILM FACED PLYWOOD	  SAMPOERNA KAYOE HEVEA	Rubber Wood	Can be reused up to 13 times Scratch resistant Extremely durable Very Flat High precision	12.0	1220 x 2440 (4" x 8")
				15.0	
				18.0	
				21.0	1250 x 2500
				30.0	(EU Market)

Glue Type

GENERAL PLYWOOD

US Standard : CARB Phase 2, US EPA

EU Standard : E0, E1, E2

JAS Standard : F4S, F3S, F2S

FLOOR-BASED PLYWOOD

F4S and F3S

FILM-FACED PLYWOOD

T1WBP

Grade

GENERAL PLYWOOD

BBCC/Overlay, UTY-E, UTY, UTY-One

FLOOR-BASE PLYWOOD

UTY, UTY-One

FILM-FACED PLYWOOD

G2S, G1S, OSF, UTY

CERTIFICATIONS



035-112-2023
Made from Renewable / Sustainable Materials

APPLICATION

	GENERAL PLYWOODS	FLOOR BASE PLYWOODS	FILM FACED PLYWOODS	LVL	DECK
1. Furniture	●			●	●
2. Interior Works	●	●		●	●
3. Flooring		●		●	●
4. Structural	●			●	
5. Shuttering Work	●		●		
6. Walls	●			●	●
7. Truck Floors			●	●	
8. Vehicle Internal Body Works			●	●	
9. Loading Platforms				●	
10. Roofs Beam				●	
11. Heavy equipment packaging	●			●	
12. Decking				●	●
13. Pergola				●	●

We have a splendid array of product applications beyond this list. Begin your wood solution with us today.

PT SUMBER GRAHA SEJAHTERA
HEAD OFFICE Sampoerna Strategic Square, North Tower, 21st Floor
Jl. Jenderal Sudirman Kav. 45-46, Jakarta Selatan 12930, Indonesia
T (62 21) 576 1138 (Hunting) | F (62 21) 576 1152 - 575 1153 | T (62 21) 576 1158 (Marketing)

SAMKO TIMBER LIMITED
7500A Beach Road, #08-305/307 The Plaza, Singapore 199591 T (65) 6298 2189 | F (65) 6298 2187
www.sampoernakayoe.co.id



@sampoernakayoe



Sampoerna Kayoe



Sampoerna Kayoe



@sampoernakayoe