



SAMPOERNA KAYOE

DECK



UNLIMIT POSSIBILITIES



SAMPOERNA KAYOE

Sampoerna Kayoe Deck Catalog | Table of contents:

Corporate Profile - [02](#) | Sustainable Resources - [06](#) | List of Sampoerna Kayoe Products - [08](#)
Deck Overview - [10](#) | Product Detail - [15](#) | Certification - [17](#)



SAMPOERNA KAYOE

Sampoerna Kayoe A Leading Engineered Wood Solution Provider in South East Asia

Established in 1978, we started out as a downstream processed timber products manufacturer without natural forest concessions and industrial forest plantations. Our first operation was started in Sulawesi, with an annual production capacity of 12,000 m³.

Our Journey

Over the past 40 years, we have focused extensively on developing our research and development, management, processing, logistics, and distribution capabilities so as to achieved a competitive edge over other competitors. We have developed a strong business and operating model, enabling us to continuously expand our processing capacity and maintain sustainability in production. Our strong experience has helped us gain success and grow steadily amid the changing business environment. The organic expansion in our group contributed a total production capacity of more than 850,000 m³ annually, allowing us to be a major engineered wood manufacturer in Indonesia and one of the largest globally.



Unlimit Possibilities

With the fast-paced and ever-changing business environment, we have undergone a brand transformation and rebranded our products under the "Sampoerna Kayoe" brand. Our key brand identity is clearly defined by our tagline, "Unlimit Possibilities", as we strive to unlimit possibilities for our wood solutions in our journey to grow and expand internationally. Nurtured with Sampoerna's value and philosophy, we embrace "Anggarda Paramita", which means "Towards Excellence", as a way of life and live the "Three Hands" philosophy as we value collaboration with our stakeholders in all partnerships.



Striving for Customer Satisfaction

Achieving the satisfaction of our customer is our utmost priority. With persistent empowerment to have the customer's best interests in mind, our employees strive to care for and to meet the needs of our customers with enthusiasm.



High Capacity for Wide Range of Selections

Our main products are plywood, laminated veneer lumber (LVL), deck and door. Employing the most skilled production team, we only use first-choice wood for our products to create customised solutions for our customers. We are also equipped with high capacity production facilities to meet the growing market demand from all segments and to fulfill our mission of becoming the market leader in the industry.



Pursuing A High-Standard Process

Through our experience in the industry, we have acquired the knowledge of excellent production process. We ensure that our products and process comply with the global standards for quality and environment management. Moreover, we are 100% inspected according to international standards; we have obtained certifications from Japan Agricultural Standard (JAS), United States Environmental Protection Agency (US EPA), California Air Resource Board (CARB), ISO 9001 (Quality Management System), ISO 14001 (Environment), Green Label Singapore, Green Building Council Indonesia, and many more. We are committed to provide high-quality products consistently.

Available Worldwide

(Asia, America, Australia, Africa, Europe)

Algeria, Australia, Belgium, China, Croatia, Denmark, France, Germany, Hong Kong, India, Indonesia, Iraq, Italy, Japan, Jordan, Kuwait, Malaysia, Mexico, New Zealand, Oman, Philippines, Poland, Puerto Rico, Saudi Arabia, Singapore, South Korea, Spain, Sweden, Switzerland, Taiwan, Thailand, Timor Leste, United Arab Emirates, United Kingdom, USA.



Our manufacturing facilities:



Production Capacity
>850,000 m³



6 main processing plants in Java, Sumatra, Sulawesi.



10 satellite veneer plants in Java and Sumatra

Sustainable Resources

We continuously improve technology and efficiency to maximize our production capacity while maintaining sustainability of natural resources.

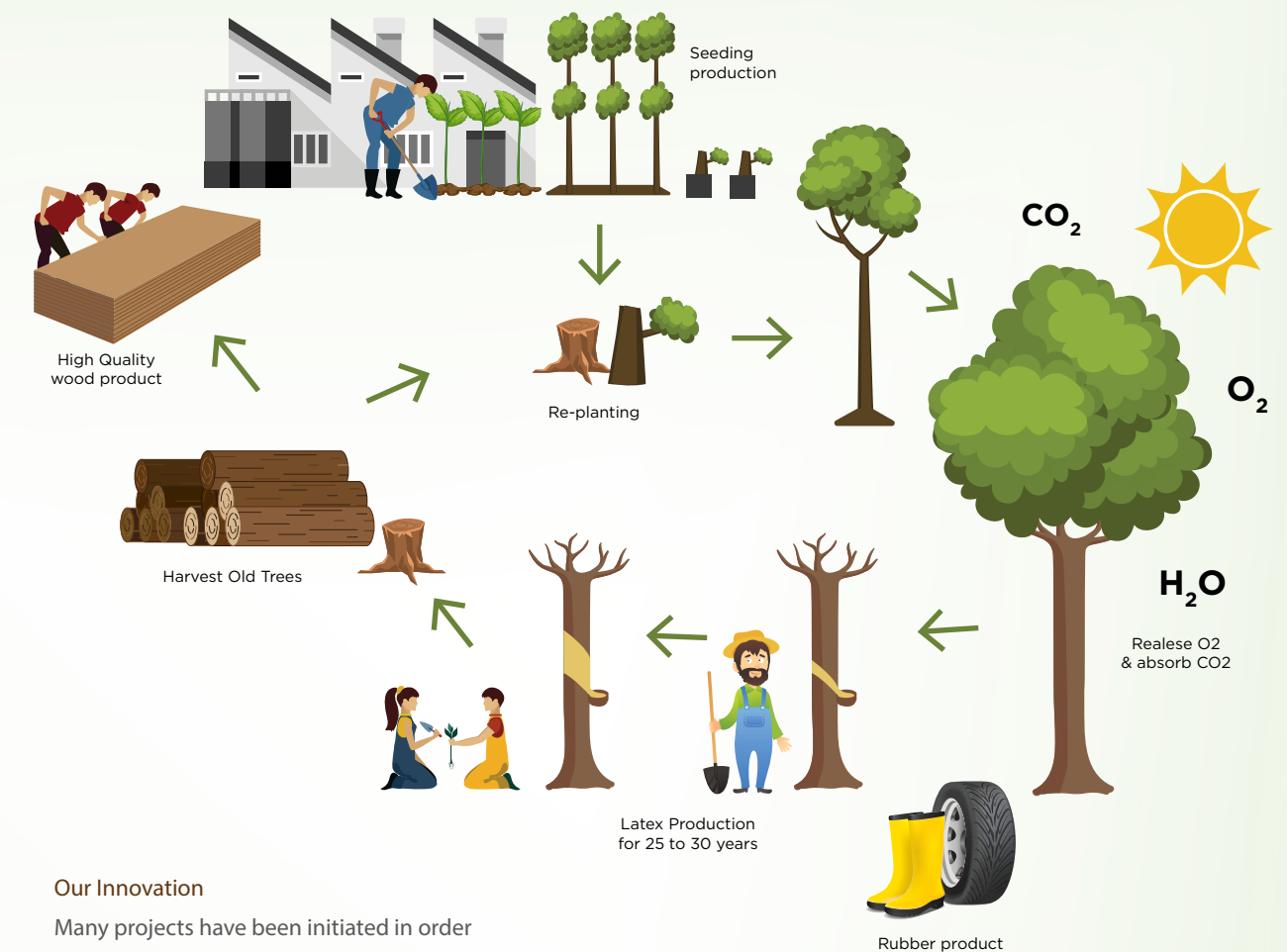
Corporate Responsibility

Sampoerna Kayoe is committed to adopt an integrated approach in achieving business development and responsible environmental management. Our commitment to sustainable development is reflected in our Corporate Values and Code of Ethics. In the process of converting raw materials into finished products, we adopt a fundamental principle: "Satisfying the present needs without compromising on the future". As a trusted timber-processing company, we are committed to our mission and corporate values to ensure long-term sustainability of business, community, and environment.



Legal Sources

Sampoerna Kayoe's log is sourced entirely from legal concession areas in Indonesia, with 90% originating from community and plantation forests. We continue to create new commercial timber growing areas and seek new sources of plantation wood. Our log purchasing policy requires that any purchase of log shall comply with applicable regulations and legal procedures in Indonesia. We refuse any log purchase from any suppliers or farmers involved in the practice of illegal land burning. We are proud that all our facilities comply with the Indonesian national timber-legality verification scheme, SLVK. This scheme is the implementation of the Voluntary Partnership Agreement (VPA) on Forest Law Enforcement, Governance and Trade (FLEGT) signed by European Union Countries as the Indonesian government is campaigning for wider recognition for its wood products in other markets.



Our Innovation

Many projects have been initiated in order to achieve sustainable solution for our natural resources, resulting in two innovation breakthroughs.

Sampoerna Kayoe pioneered the use of alternative sustainable wood, such as falcata timber, in response to the limited availability of hardwood. Falcata is a fast-growing tree species that is abundantly available in Indonesia and is easily replanted to promote sustainability of our natural resources.

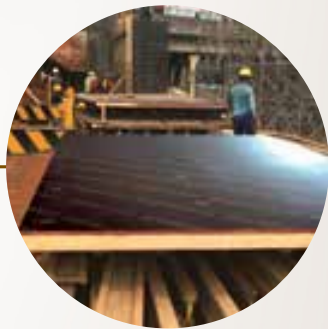
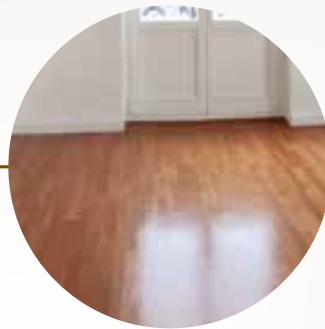
Our latest innovation is the utilisation of rubber plantation waste. Rubber trees (*Hevea Brasiliensis*) are planted for the production of latex and the economic life span is between 25 and 30 years. At the end of its life span, the trees are felled and the wood from the tree has been traditionally regarded as waste. With our technology, however, we are able to transform this waste into high-quality wood products.

1. As rubber trees are planted, they release O₂ and absorb CO₂ during the day; this process itself has positive impacts on the environment.
2. After it reaching maturity, rubber trees are tapped and kept for latex production for 25-30 years. Some examples of their finished products include tires, rubber gloves and rubber shoes.
3. After the rubber trees stop producing latex, the wood remains are typically burnt due to the poor quality of wood products that usually result from its production. However, with our current technology, the rubber trees which are processed by Sampoerna Kayoe, are able to produce wood products which are high-quality for daily usage.
4. Sampoerna Kayoe cares about the sustainability of rubber wood production; we create a superior rubber seed via our various innovative practices. We replant the trees by ourselves and also distribute the seeds to local community for planting. This process not only ensures the sustainability of our rubber wood production, it also benefits the local community due to the commercial value of latex production after the trees reach maturity.

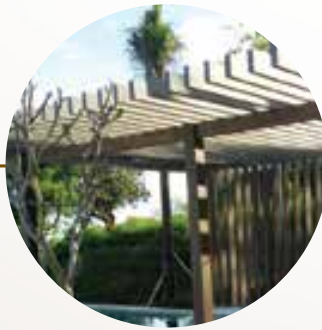
Our Product Categories



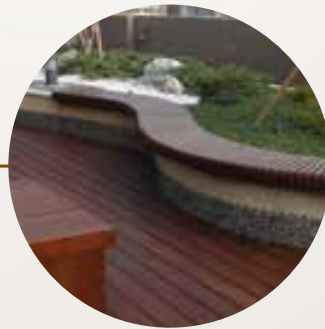
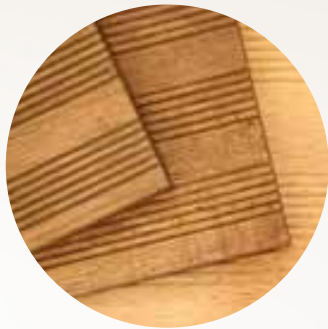
PLYWOOD



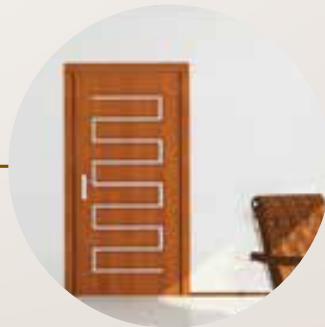
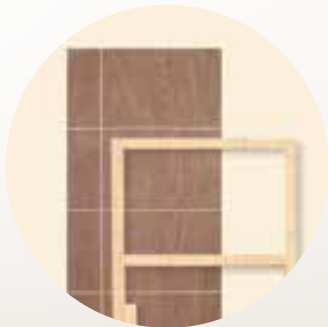
LVL



DECK



DOOR





SAMPOERNA KAYOE

DECK

Using the latest impregnation technology, Sampoerna Kayoe's engineered wood are tailored exclusively to your individual needs.

Sampoerna Kayoe project in Croatia



100% REAL WOOD

- Natural wood grain & warmth
- Originating from sustainable sources, with DNA from rubber tree (*Hevea brasiliensis*) plantation grown on reclaimed land
- Recyclable



EXCELLENT DURABILITY

- Using Impregnation Technology
- Resistance to termites, insect, and weathering
- As durable as solid wood
- Minimum maintenance cost



SUPERIOR DIMENSION STABILITY

- Up to 50% less expansion and contraction than solid hardwood



READY TO INSTALL

- Uniform moisture content means no conventional wood seasoning required
- Pre-sealed and stained



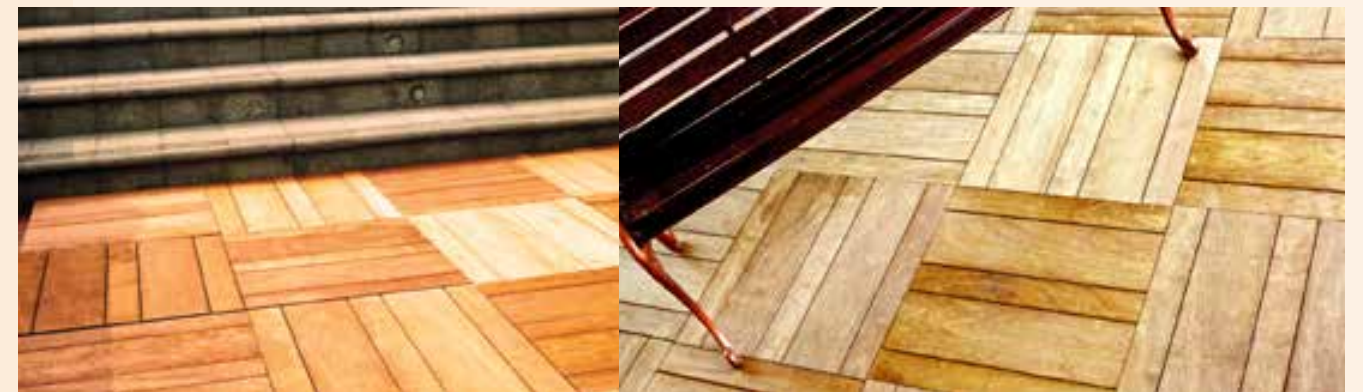
BAREFOOT FRIENDLY

- Thermal conductivity of below 1



DECKING

Sampoerna Kayoe project in Taiwan
Sky Deck in Europe
Ritz Carlton Mandapa, Bali, Indonesia



DECK TILE

Sampoerna Kayoe project at Sampoerna Strategic Square



PERGOLA

Sampoerna Kayoe project in luxury villa & residences Selong Selo



FENCING

RAILING | Sampoerna Kayoe project in Taiwan



BEAM



STAIRCASE



OUTDOOR FURNITURE






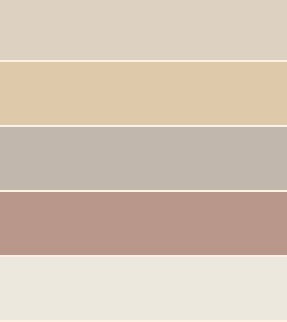


FACADE/WALL CLADDING

PRODUCT DETAILS

Our engineered wood products are recognized for their distinctive characteristics owing to our experience and innovation, which we have accumulated through almost four decades. Our decking includes tiles, railing, fencing, pergola, and wall cladding, which is suitable for residential or commercial use, and can be customized to fit your needs.

PRODUCT NAMES	SIZE (MM)	PRODUCT SPECIFICATION	SPECIES WOOD	COATING
	20 x 90 x 5000	Glue Type: Phenolic Resin	Face Options: Rubber Teak MLH	Coating Option Available
	20 x 145 x 5000	Veneer Type: All Impregnated Rubber	Core: Rubber	
	20 x 195 x 5000	Grade: High / S&B Coating: Anti Fungus		

DECK PROFILE

	90 mm	CLEAR	
		ANTHRACIT ALMOST BLACK	
		DARK BROWN-TW MERBAU-3	
	145 mm	LIGHT TEAK	
		BROWN/MERBAU-WHITE STEIN2	
		SMOKE	
	195 mm	CLEAR/NATURAL	
		UNTREATED	
		MERBAU	
		WHITE STAIN	
		DARKBORWN-TM MERBAU 1	
		LIGHT TEAK	

TECHNICAL INFORMATION

PROPERTIES	STANDARD	Wood SPECIES Rubber 25mm Impregnated Hevea
DENSITY	JAS 2014 FOR LVL	0.75 - 0.8 g/cm ³
BENDING	JAS 2014 FOR LVL	Bending Classification (110E - 120E)
HORIZONTAL SHEAR	JAS 2014 FOR LVL	Horizontal shear class (65V - 43H)
NAIL HOLDING	JIS Z 2102	2186.98 N
SCREW HOLDING	(JIS A 5098) 2003	1121.36 N
HARDNESS	ASTM D143-94-2000	8119.15 N/mm ²
EMISSION	JAS 2014 FOR LVL	Classification F***
DELAMINATION	JAS 2014 FOR LVL	100% (Passed)
MC	JAS 2014 FOR LVL	<14%

CERTIFICATIONS





CLEANING THE DECK AND FACADE

Over time rain and moisture will make your wooden decking / cladding dirty, this appears in the form of green algae, dirt and other coatings. Therefore, you should clean your deck regularly to ensure the cleanliness of your wooden decking / cladding.

To clean your deck, rinse it with water, apply the deck-cleaner with a brush and then scrub the surface lengthwise. Afterwards, rinse the decking thoroughly and repeat the treatment as needed.

If you are planning to coat your deck subsequently, you must let the wood dry for a day or so, before you start the coating treatment.



COATING DECK AND FACADE

A new deck or facade should be treated with coating even before it is used. We recommend that you maintain your wooden deck / facade with coating depends on how exposed the deck or facade is to wind and weathering.

Use coating with colour pigments and fungicides. The coating should be UV-resistant and of a non-curing type. In the first season, we recommend that you let the wood be filled by coating it approximately 2-3 times. The wood patinates if it is not being coated.

The coating protects the wood, because it helps the surface to become more resistant to weather influences. Risks of cracking are reduced by coating and it also works as a "breath of fresh air" to your decking, while it highlights the wood grain. Remember to give the cross section of the boards some wax.

Frequency of coating depends on how exposed the deck or facade is to wind and weathering. If the wood is not treated often enough, it will patinate and become greyish.

HOW TO:

1. Before you begin coating, you should clean your deck or facade thoroughly.
2. Then check that the deck or facade is completely clean and dry. Coating shall take place in only dry weather, so the coat gets the best conditions to soak into the wood.
3. The coating should be stirred thoroughly before use.
4. The coating is applied with a brush or other painting tools. Always start with the ends of the boards.
5. After maximum 20 minutes remove excess coating from deck/ facade with a clean and dry cloth. Repeat the above, if the wood does not seem saturated.
6. If you want to make the surface extra durable; we recommend that you polish your deck/facade with a polishing machine.
7. Depending on the weather, including temperature on the day you treat the decking or cladding with coating, it will take between 24 to 48 hours, before the coating is fully cured. During this period, the wood, as with the coating, must NOT be exposed to water.

APPLICATION

	GENERAL PLYWOODS	FLOOR BASE PLYWOODS	FILM FACED PLYWOODS	LVL	DECK
1. Furniture	●			●	●
2. Interior Works	●	●		●	●
3. Flooring		●		●	●
4. Structural	●			●	
5. Shuttering Work	●		●		
6. Walls	●			●	●
7. Truck Floors			●	●	
8. Vehicle Internal Body Works			●	●	
9. Loading Platforms				●	
10. Roofs Beam				●	
11. Heavy equipment packaging	●			●	
12. Decking				●	●
13. Pergola				●	●

We have a splendid array of product applications beyond this list. Begin your wood solution with us today.

PT SUMBER GRAHA SEJAHTERA
HEAD OFFICE Sampoerna Strategic Square, North Tower, 21st Floor
Jl. Jenderal Sudirman Kav. 45-46, Jakarta Selatan 12930, Indonesia
T (62 21) 576 1138 (Hunting) | F (62 21) 576 1152 - 575 1153 | T (62 21) 576 1158 (Marketing)

SAMKO TIMBER LIMITED
7500A Beach Road, #08-305/307 The Plaza, Singapore 199591 T (65) 6298 2189 | F (65) 6298 2187
www.sampoernakayoe.co.id



@sampoernakayoe



Sampoerna Kayoe



Sampoerna Kayoe



@sampoernakayoe